

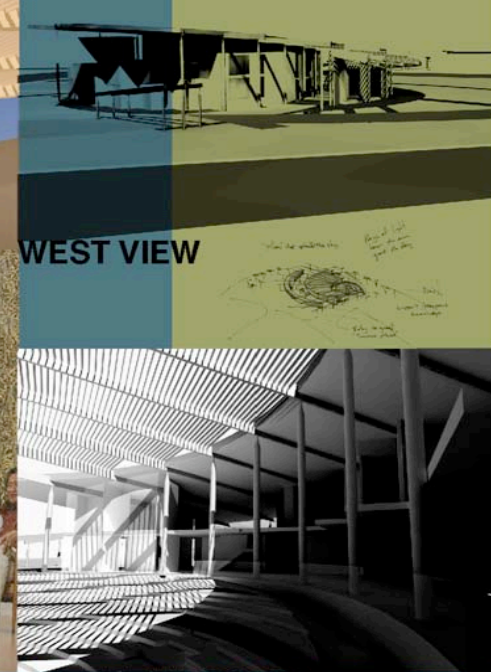
ONE IS CAPTURED AND BEGINS TO BE CARRIED ALONG BY ITS CURRENTS



VIEW FROM SUNRISE ENTRY

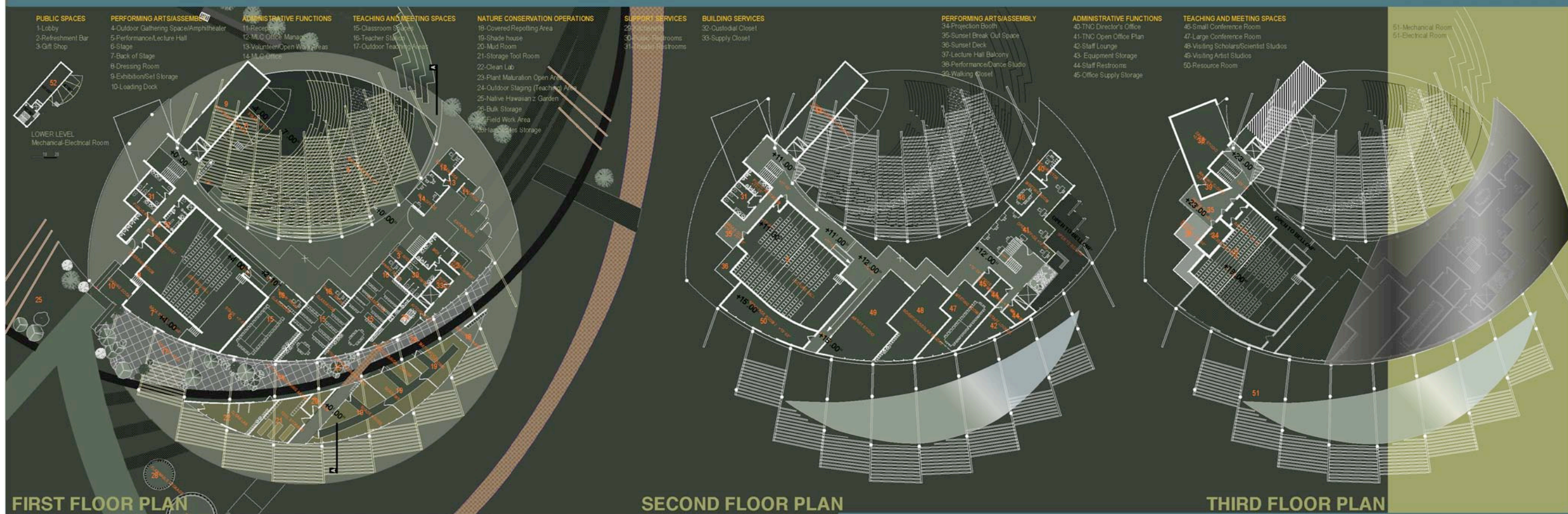


LOBBY FROM ENTRANCE



GATHERING SPACE

WEST VIEW

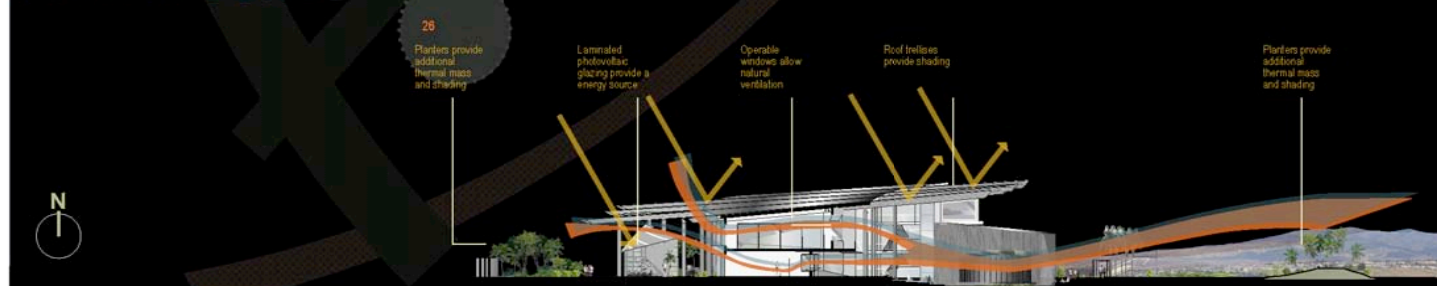


FIRST FLOOR PLAN

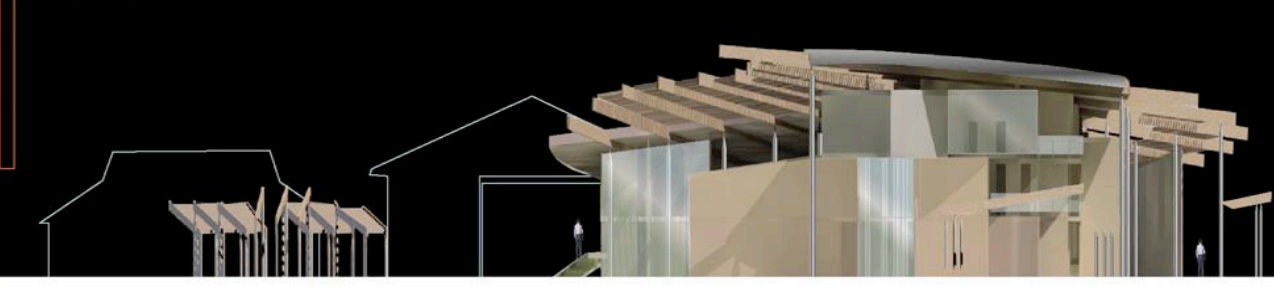
SECOND FLOOR PLAN

THIRD FLOOR PLAN

SOLAR/WIND STUDY



NORTH ELEVATION





+44.00'

The building structure is composed of concrete piers with embedded and cantilevered stainless steel pillars supporting the glu-laminated beams and roof system above. Concrete shear walls (with minimum thickness and width) at 3 story volumes. Post tension concrete slabs at second and third levels. Stainless steel space frames at major opening expanses. Plaza areas are composed of a combination of lava pavers wood decks and concrete.

DESIGN STORY

SITE SECTION A



Protection
The building centers along the sun's path on May 1st, this allows the "sunrise / sunset entries" to focus commemoration of Lei Day. The botanical garden enhances the entry's connections.

Sun
The building structural systems are founded on the spirit and views of the Pu'u o Kapolei.

Land
Gentle trade winds are directed through the structure.

Wind
The building structural systems are founded on the spirit and views of the Pu'u o Kapolei.

Migration
Roof forms takes cues from migratory mythology.

Nature
The pillars uphold the upper levels, the sky and connect the structure to the earth. The student is the pillar in between. Pillars mark and honor entrance to the consciousness of entry, humility and learning. The pillar of the community, the pillar of learning.

Unity
At the heart of the community, in the hearts of children, plant the opportunity for hands on work, the search for individuality in the unity.

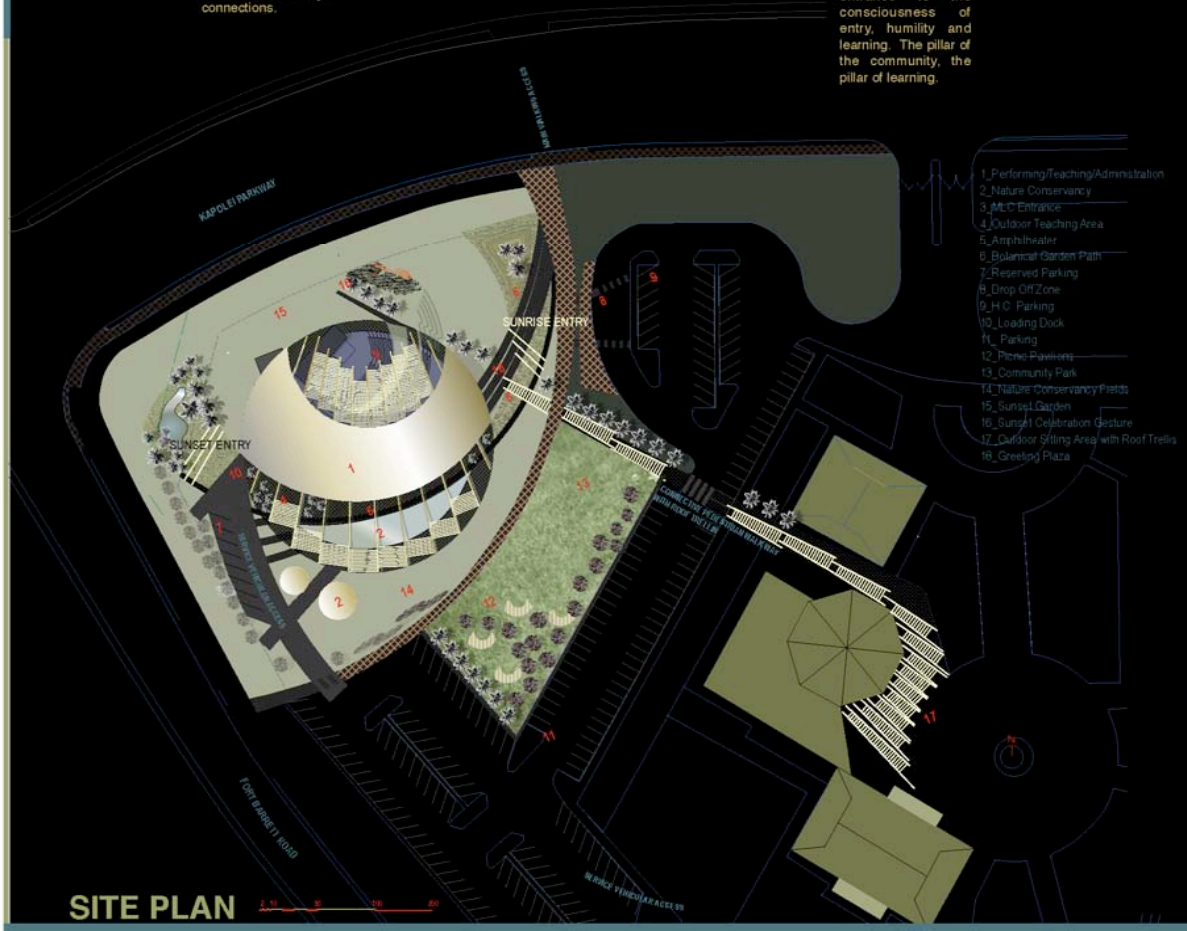
Hawaii, sustainer of nature by grand design, is the foundation of our proposal for the Malama Learning Center. Designing the Malama Learning Center is an extraordinary architectural opportunity, as the verities of creation within the fiery birth and arching archipelago of the islands compose the story of natural form building. The humps of the mountains, the placid swells of the sea, the arc of a bird's flight and wings, the carving of the wind, all seed a shield for the gentle forms of life that take shelter from the extreme heat and wind on the dry plain of 'ewa.

The conceptual basis of the learning center is the structure of a bird's nest: it protects, fosters new life and imagination, and sustains the migration of knowledge. The nest is sited and planned along the sun's elliptical path, embracing both sunrise and sunset. The roof forms gather prevailing winds from the northeast to cool the internal spaces below the main roof structure and minimize dependence on mechanical systems. A precise arrangement of beams and trusses that covers the entire building alleviates the effects of direct sunlight, and provides shade for both indoor and outdoor spaces. The crescent-shaped conservatory, clad with white translucent photovoltaic glazing, offers shelter for the shade-houses while taking full advantage of a renewable energy source. The outdoor amphitheater, depressed seven feet, celebrates views toward the mountain preserves of Pu'u Makakilo and is partially protected from the sun by the beamed structure that is situated above it.

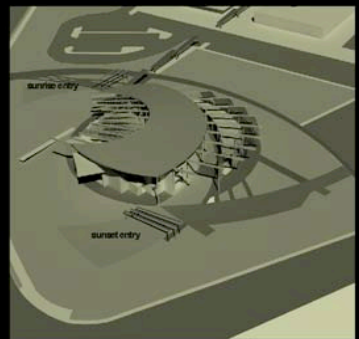
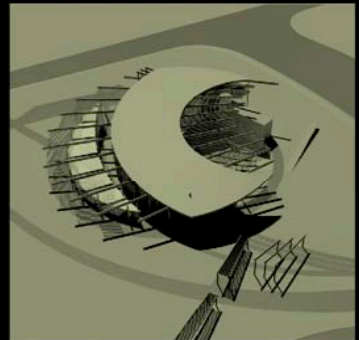
Our building design carefully provides shelter from the sun to its inhabitants, while fulfilling the programs by allocating spaces to rest, perform, dance, and study beneath an array of structural pillars that uphold the roof and adhering to the community's consciousness of entry, humility, and learning.

Through this structure, a story will be built around the lives of the people of Kapolei: the story of those who sought to uncover the purpose of their ancestors' daily lives and imparted those lessons not only to their heirs, but to the rest of the world. And this is what the children of 'ains, generators of wisdom, have taught us – sustaining by design, with the utmost respect given to our nature's resources.

The building structure is composed of concrete piers with embedded and cantilevered stainless steel pillars supporting the glu-laminated beams and roof system above. Concrete shear walls (with minimum thickness and width) at 3 story volumes. Post tension concrete slabs at second and third levels. Stainless steel space frames at major opening expanses. Plaza areas are composed of a combination of lava pavers wood decks and integral color concrete.



SITE PLAN



AERIAL VIEWS



SOUTH ELEVATION



EAST-NORTH ELEVATION

